



300 Manning Road N.E., Calgary, AB. T2E 8K4  
Phone: (403) 263-0530, Fax: (403) 218-3688

# News Release

For more information, please contact:  
Ron Esch, Executive Vice President, at 781-1308  
Stacey Gray, Communications Supervisor at 781-1318

*For Immediate Release*

## **MLS® SALES REMAIN STRONG AS THE END OF SUMMER APPROACHES**

**Calgary, September 4, 2006** – MLS® sales remained almost on par with July, but dropped significantly from last year's record breaking August sales numbers, according to figures released by the Calgary Real Estate Board (CREB®).

August combined residential sales totaled 2,516, showing a 9.46 per cent decrease over August 2005 when the sales were recorded as 2,779 and showing just a slight decrease of 2.71 per cent from last month's sales of 2,586. The following shows the breakdown of the August combined sales; 1,684 single-family residences, 812 condominium, and 20 mobile homes. August 2005 sales in the same categories were, 1,953, 814, and 12, respectively.

The average combined residential sale price for August 2006 was \$365,732, showing a 49.61 per cent increase over August 2005, when the average price was \$244,456, and a 2.21 per cent increase over July 2006's average price of \$357,831. Broken out, the following is a comparison of single-family, condominium, and mobile home average sale prices for the month of August 2006 over 2005: single-family \$412,331 / \$272,438; condominium \$276,536 / \$180,339; and mobile home \$63,415 / \$39,516.

August 2006 residential combined listings totaled 4,271. This is a 28.72 per cent increase over August 2005, when 3,318 listings came to market and showing a 4.43 per cent decrease over the 4,469 homes listed in July.

Condominium sales remained steady with 812 units changing hands. Sales for condominiums for the same period last year were 814 showing a very slight decrease of just 0.25 per cent. The average condominium price in August 2006 was \$276,536, the highest August recorded on the MLS®, compared to the \$180,339 in August 2005 and showing a 53.34 per cent increase and a 1.8 per cent increase over the July average price of \$271,641.

"August has been an interesting month for the MLS® with various opinions as to if and how much, the market may be cooling off. The theories behind the opinions are equally varied but include construction completions and typical seasonal slow-downs. Whatever the reasons, the most important thing is still to remember to prepare and price one's property competitively. Your REALTOR® is the best person to look to for help in showing off the features of your property, and for accurate pricing within a given market," says CREB® President Kevin Clark. "Often times we hear of sellers who are frustrated at how long their property has been on the market; this is commonly either because of presentation or pricing. It is very important to look to your REALTOR® throughout the listing period, for up-to-date and sound advice."

Average price information can be useful in establishing trends over time, but does not indicate actual prices in centres comprised of widely divergent neighbourhoods or account for price differentials between geographical areas. The median price is determined by selecting the middle number of total sale prices – the combined residential median price for August 2006 was \$328,000; up 49.43 per cent from August 2005, when the median price was \$219,500 and down 0.61 per cent from the median price in July of \$330,000.

The Calgary Real Estate Board is a professional body of 5,375 licensed brokers and registered agents, representing 258 Member offices. The Board does not generate statistics or analysis of any individual member or company's market share. All MLS® active listings for Calgary and area may be found on the Board's website at [www.creb.com](http://www.creb.com).

**CALGARY REAL ESTATE BOARD CO-OPERATIVE LIMITED**  
**MONTHLY STATISTICS FOR AUGUST 2006**

**SINGLE FAMILY**

	<u>2006</u>	<u>2005</u>	<u>Mth Chg</u>	<u>2006 YTD</u>	<u>2005 YTD</u>	<u>YTD Chg</u>
Actives @ end of month	3,721			n/a	n/a	n/a
New Listings	3,123	2,337	33.63%	22,571	21,371	5.62%
Sales	1,684	1,953	-13.77%	17,097	15,703	8.88%
Avg DOM	26	37	-29.73%	21	38	-44.74%
Average Sale Price	412,331	272,438	51.35%	378,383	272,761	38.72%
Median Price	370,000	248,000	49.19%	345,000	243,000	41.98%
Dollar Volume	694,365,252	532,071,833	30.50%	6,469,210,923	4,283,162,354	51.04%
Sales to Listing Ratio	53.92%	83.57%	-35.47%	75.75%	73.48%	3.09%
Sales\$/List\$	97.90%	98.00%	-0.10%	99.50%	97.90%	1.63%

**CONDOMINIUM**

Actives @ end of month	1,014			n/a	n/a	n/a
New Listings	1,131	953	18.68%	8,409	7,993	5.20%
Sales	812	814	-0.25%	7,070	5,969	18.45%
Avg DOM	23	38	-39.47%	19	42	-54.76%
Average Sale Price	276,536	180,339	53.34%	252,253	181,333	39.11%
Median Price	258,000	160,500	60.75%	235,000	162,000	45.06%
Dollar Volume	224,547,571	146,795,997	52.97%	1,783,431,948	1,082,374,909	64.77%
Sales to Listing Ratio	71.80%	85.41%	-15.94%	84.08%	74.68%	12.59%
Sales\$/List\$	98.70%	97.90%	0.82%	100.50%	97.80%	2.76%

**MOBILE**

Actives @ end of month	14			n/a	n/a	n/a
Listings	17	28	-39.29%	174	265	-34.34%
Sales	20	12	66.67%	153	108	41.67%
Avg DOM	42	65	-35.38%	51	78	-34.62%
Average Sale Price	63,415	39,516	60.48%	47,223	39,033	20.98%
Median Price	50,000	45,000	11.11%	42,000	35,000	20.00%
Dollar Volume	1,268,300	474,194	167.46%	7,225,188	4,215,590	71.39%
Sales to Listing Ratio	117.65%	42.86%	174.51%	87.93%	42.86%	105.17%
Sales\$/List\$	96.40%	95.30%	1.15%	94.90%	91.90%	3.26%

**RURAL w/ HOME**

Actives @ end of month	450			n/a	n/a	n/a
New Listings	176	158	11.39%	1,322	1,373	-3.71%
Sales	78	99	-21.21%	800	707	13.15%
Avg DOM	54	67	-19.40%	60	79	-24.05%
Average Sale Price	657,872	497,486	32.24%	679,702	501,311	35.58%
Median Price	565,000	420,000	34.52%	585,000	439,300	33.17%
Dollar Volume	51,314,050	49,251,096	4.19%	543,761,891	354,427,094	53.42%
Sales to Listing Ratio	44.32%	62.66%	-29.27%	60.51%	51.49%	17.52%
Sales\$/List\$	94.70%	95.50%	-0.84%	96.30%	95.90%	0.42%

**RURAL LAND**

Actives @ end of month	179			n/a	n/a	n/a
New Listings	63	55	14.55%	548	468	17.09%
Sales	26	35	-25.71%	327	221	47.96%
Avg DOM	59	128	-53.91%	111	104	6.73%
Average Sale Price	979,681	272,177	259.94%	506,906	304,321	66.57%
Median Price	366,654	191,000	91.97%	290,000	189,000	53.44%
Dollar Volume	25,471,702	9,526,200	167.39%	165,758,381	67,254,869	146.46%
Sales to Listing Ratio	41.27%	63.64%	-35.15%	59.67%	47.22%	26.36%
Sales\$/List\$	96.90%	95.40%	1.57%	96.60%	96.30%	0.31%

**RESIDENTIAL COMBINED (Single Family, Condo, Mobile)**

Actives @ end of month	4,749			n/a	n/a	n/a
New Listings	4,271	3,318	28.72%	31,154	29,629	5.15%
Sales	2,516	2,779	-9.46%	24,320	21,780	11.66%
Avg DOM	25	37	-32.43%	20	39	-48.72%
Average Sale Price	365,732	244,456	49.61%	339,633	246,545	37.76%
Median Price	328,000	219,500	49.43%	308,000	220,000	40.00%
Dollar Volume	920,181,123	679,342,024	35.45%	8,259,868,059	5,369,752,853	53.82%
Sales to Listing Ratio	58.91%	83.76%	-29.67%	78.06%	73.51%	6.20%
Sales\$/List\$	98.10%	98.00%	0.10%	99.70%	97.90%	1.84%

**TOTAL MLS<sup>®</sup>**

Actives @ end of month	5,378			n/a	n/a	n/a
New Listings	4,510	3,531	27.73%	33,024	31,470	4.94%
Sales	2,620	2,913	-10.06%	25,447	22,708	12.06%
Average Sale Price	380,522	253,388	50.17%	352,473	255,039	38.20%
Dollar Volume	996,966,875	738,119,320	35.07%	8,969,388,331	5,791,434,816	54.87%
Sales to Listing Ratio	58.09%	82.50%	-29.58%	77.06%	72.16%	6.79%

\*\*Year-to-date values in the monthly statistics package will accurately reflect our database at that specific point in time. Older monthly statistics will not reflect up-to-date changes that naturally occur.

**CALGARY REAL ESTATE BOARD CO-OPERATIVE LIMITED**  
**SINGLE FAMILY UNIT SALES BY PRICE CATEGORY AS AT AUGUST 31, 2006**

<i>City</i>	<b>Aug-06</b>				<b>Aug-05</b>			
	<b>Month</b>		<b>Y.T.D.</b>		<b>Month</b>		<b>Y.T.D.</b>	
	<b>#</b>	<b>%</b>	<b>#</b>	<b>%</b>	<b>#</b>	<b>%</b>	<b>#</b>	<b>%</b>
0 - 49,999	1	0.07%	1	0.01%	0	0.00%	1	0.01%
50,000 - 59,999	0	0.00%	0	0.00%	0	0.00%	0	0.00%
60,000 - 69,999	0	0.00%	0	0.00%	0	0.00%	0	0.00%
70,000 - 79,999	0	0.00%	0	0.00%	0	0.00%	0	0.00%
80,000 - 89,999	0	0.00%	2	0.01%	0	0.00%	5	0.04%
90,000 - 99,999	0	0.00%	3	0.02%	0	0.00%	7	0.05%
100,000 - 109,999	0	0.00%	2	0.01%	2	0.12%	13	0.10%
110,000 - 119,999	1	0.07%	10	0.07%	5	0.31%	23	0.17%
120,000 - 129,999	1	0.07%	14	0.10%	0	0.00%	63	0.48%
130,000 - 139,999	0	0.00%	15	0.11%	18	1.12%	156	1.18%
140,000 - 149,999	1	0.07%	39	0.28%	27	1.68%	224	1.70%
150,000 - 174,999	5	0.37%	173	1.23%	120	7.47%	1040	7.89%
175,000 - 199,999	8	0.59%	297	2.11%	196	12.20%	1746	13.24%
200,000 - 224,999	14	1.04%	494	3.50%	215	13.38%	1636	12.40%
225,000 - 249,999	47	3.49%	861	6.10%	187	11.64%	1717	13.02%
250,000 - 274,999	85	6.32%	1072	7.60%	202	12.57%	1592	12.07%
275,000 - 299,999	91	6.76%	1161	8.23%	153	9.52%	1181	8.95%
300,000 - 349,999	251	18.65%	2557	18.13%	203	12.63%	1482	11.24%
350,000 - 399,999	225	16.72%	2337	16.57%	106	6.60%	838	6.35%
400,000 - 499,999	348	25.85%	2830	20.06%	96	5.97%	745	5.65%
500,000 - 699,999	191	14.19%	1599	11.34%	47	2.92%	462	3.50%
700,000 - 899,999	41	3.05%	341	2.42%	21	1.31%	137	1.04%
OVER 900,000	36	2.67%	298	2.11%	9	0.56%	121	0.92%
	<b>1,346</b>		<b>14,106</b>		<b>1,607</b>		<b>13,189</b>	
<i>Out of Town</i>								
0 - 49,999	5	1.48%	81	2.71%	5	1.45%	38	1.51%
50,000 - 59,999	2	0.59%	30	1.00%	3	0.87%	19	0.76%
60,000 - 69,999	3	0.89%	33	1.10%	3	0.87%	26	1.03%
70,000 - 79,999	1	0.30%	28	0.94%	2	0.58%	20	0.80%
80,000 - 89,999	1	0.30%	31	1.04%	6	1.73%	29	1.15%
90,000 - 99,999	2	0.59%	32	1.07%	2	0.58%	33	1.31%
100,000 - 109,999	3	0.89%	28	0.94%	9	2.60%	46	1.83%
110,000 - 119,999	4	1.18%	40	1.34%	9	2.60%	57	2.27%
120,000 - 129,999	6	1.78%	63	2.11%	6	1.73%	66	2.63%
130,000 - 139,999	6	1.78%	42	1.40%	10	2.89%	88	3.50%
140,000 - 149,999	6	1.78%	42	1.40%	6	1.73%	82	3.26%
150,000 - 174,999	14	4.14%	151	5.05%	31	8.96%	275	10.94%
175,000 - 199,999	15	4.44%	167	5.59%	53	15.32%	362	14.40%
200,000 - 224,999	7	2.07%	190	6.35%	49	14.16%	320	12.73%
225,000 - 249,999	14	4.14%	254	8.49%	32	9.25%	282	11.22%
250,000 - 274,999	31	9.17%	244	8.16%	41	11.85%	233	9.27%
275,000 - 299,999	24	7.10%	253	8.46%	25	7.23%	175	6.96%
300,000 - 349,999	71	21.01%	438	14.65%	22	6.36%	148	5.89%
350,000 - 399,999	43	12.72%	330	11.04%	12	3.47%	72	2.86%
400,000 - 499,999	41	12.13%	285	9.53%	6	1.73%	68	2.70%
500,000 - 699,999	19	5.62%	137	4.58%	12	3.47%	55	2.19%
700,000 - 899,999	12	3.55%	53	1.77%	2	0.58%	16	0.64%
OVER 900,000	8	2.37%	38	1.27%	0	0.00%	4	0.16%
	<b>338</b>		<b>2,990</b>		<b>346</b>		<b>2,514</b>	

Note: Does not include Condo or Mobile Home

\*\*Year-to-date values in the monthly statistics package will accurately reflect our database at that specific point in time. Older monthly statistics will not reflect up-to-date changes that naturally occur."

**CALGARY REAL ESTATE BOARD CO-OPERATIVE LIMITED**  
**CONDO UNIT SALES BY PRICE CATEGORY AS AT AUGUST 31, 2006**

<i>City</i>	<b>Aug-06</b>				<b>Aug-05</b>			
	#	Month %	Y.T.D. %		#	Month %	Y.T.D. %	
0 - 49,999	0	0.00%	1	0.02%	0	0.00%	3	0.06%
50,000 - 59,999	0	0.00%	0	0.00%	0	0.00%	3	0.06%
60,000 - 69,999	0	0.00%	5	0.08%	0	0.00%	6	0.11%
70,000 - 79,999	0	0.00%	1	0.02%	2	0.28%	17	0.31%
80,000 - 89,999	0	0.00%	8	0.13%	7	0.97%	76	1.40%
90,000 - 99,999	0	0.00%	10	0.16%	23	3.18%	134	2.47%
100,000 - 109,999	1	0.15%	24	0.39%	22	3.04%	206	3.79%
110,000 - 119,999	4	0.59%	58	0.94%	38	5.25%	338	6.22%
120,000 - 129,999	2	0.29%	80	1.30%	48	6.63%	361	6.65%
130,000 - 139,999	2	0.29%	142	2.30%	51	7.04%	449	8.27%
140,000 - 149,999	2	0.29%	151	2.44%	65	8.98%	491	9.04%
150,000 - 174,999	12	1.76%	520	8.42%	162	22.38%	1117	20.56%
175,000 - 199,999	43	6.31%	796	12.89%	120	16.57%	797	14.67%
200,000 - 224,999	96	14.10%	762	12.34%	56	7.73%	449	8.27%
225,000 - 249,999	119	17.47%	920	14.90%	54	7.46%	352	6.48%
250,000 - 274,999	98	14.39%	721	11.67%	21	2.90%	186	3.42%
275,000 - 299,999	89	13.07%	627	10.15%	14	1.93%	127	2.34%
300,000 - 349,999	109	16.01%	690	11.17%	22	3.04%	147	2.71%
350,000 - 399,999	45	6.61%	291	4.71%	7	0.97%	59	1.09%
400,000 - 499,999	41	6.02%	210	3.40%	7	0.97%	51	0.94%
500,000 - 699,999	15	2.20%	113	1.83%	2	0.28%	43	0.79%
700,000 - 899,999	1	0.15%	32	0.52%	2	0.28%	13	0.24%
OVER 900,000	2	0.29%	14	0.23%	1	0.14%	7	0.13%
	<b>681</b>		<b>6,176</b>		<b>724</b>		<b>5,432</b>	
<i>Out of Town</i>								
0 - 49,999	1	0.76%	16	1.79%	1	1.11%	1	0.19%
50,000 - 59,999	0	0.00%	1	0.11%	0	0.00%	0	0.00%
60,000 - 69,999	0	0.00%	2	0.22%	0	0.00%	3	0.56%
70,000 - 79,999	1	0.76%	2	0.22%	5	5.56%	8	1.49%
80,000 - 89,999	13	9.92%	20	2.24%	0	0.00%	10	1.86%
90,000 - 99,999	16	12.21%	31	3.47%	5	5.56%	23	4.28%
100,000 - 109,999	0	0.00%	8	0.89%	1	1.11%	26	4.84%
110,000 - 119,999	1	0.76%	24	2.68%	5	5.56%	47	8.75%
120,000 - 129,999	0	0.00%	30	3.36%	7	7.78%	38	7.08%
130,000 - 139,999	3	2.29%	35	3.91%	11	12.22%	59	10.99%
140,000 - 149,999	1	0.76%	46	5.15%	13	14.44%	59	10.99%
150,000 - 174,999	6	4.58%	90	10.07%	22	24.44%	101	18.81%
175,000 - 199,999	9	6.87%	108	12.08%	4	4.44%	38	7.08%
200,000 - 224,999	16	12.21%	118	13.20%	1	1.11%	16	2.98%
225,000 - 249,999	12	9.16%	91	10.18%	1	1.11%	12	2.23%
250,000 - 274,999	16	12.21%	67	7.49%	1	1.11%	14	2.61%
275,000 - 299,999	13	9.92%	54	6.04%	2	2.22%	15	2.79%
300,000 - 349,999	8	6.11%	42	4.70%	2	2.22%	20	3.72%
350,000 - 399,999	4	3.05%	34	3.80%	5	5.56%	21	3.91%
400,000 - 499,999	1	0.76%	43	4.81%	1	1.11%	17	3.17%
500,000 - 699,999	8	6.11%	24	2.68%	3	3.33%	8	1.49%
700,000 - 899,999	0	0.00%	4	0.45%	0	0.00%	1	0.19%
OVER 900,000	2	1.53%	4	0.45%	0	0.00%	0	0.00%
	<b>131</b>		<b>894</b>		<b>90</b>		<b>537</b>	

Note: Does not include Single-Family or Mobile Home

\*\*Year-to-date values in the monthly statistics package will accurately reflect our database at that specific point in time. Older monthly statistics will not reflect up-to-date changes that naturally occur."

**CALGARY REAL ESTATE BOARD CO-OPERATIVE LIMITED**  
**SINGLE FAMILY DETACHED HOMES STATISTICS FOR AUGUST 2006**

<b>STYLE</b>	<b>#Actives</b>	<b>#List</b>	<b>#Sales</b>	<b>Avg S\$</b>	<b>Total S\$</b>	<b>Median \$</b>	<b>Avg DOM</b>	<b>S\$/L\$</b>
<b>NW</b>								
BK-SP	11	12	4	350,675	1,402,700	339,800	19	97.78%
BLEVL	87	83	51	375,088	19,129,500	346,000	25	98.19%
BUNG	301	221	114	442,209	50,411,852	405,000	22	97.82%
BUNGH	16	9	5	554,560	2,772,800	598,000	24	99.69%
BUNGS	1							
HL-SP		1						
MOBLS	1	2	1	13,500	13,500	13,500	9	90.60%
SPLT2	72	42	26	482,258	12,538,700	448,500	27	97.89%
SPLT3	6	6	5	420,380	2,101,900	398,000	29	99.26%
SPLT4	50	51	24	398,245	9,557,888	367,888	27	98.79%
SPLT5	4	3	1	271,000	271,000	271,000	57	100.41%
ST1.5	29	20	5	401,260	2,006,300	385,500	13	98.42%
ST2	502	444	216	460,947	99,564,649	428,000	25	98.41%
ST2.5	3	2						
ST3	3	1						
<b>NE</b>								
BK-SP	6	6	4	272,975	1,091,900	255,900	41	97.96%
BLEVL	154	140	86	280,269	24,103,101	280,500	24	96.53%
BUNG	186	177	73	291,979	21,314,503	284,900	20	97.85%
BUNGH	1							
MODUL	1	2						
SPLT2	25	15	3	318,333	955,000	350,000	19	94.69%
SPLT3	6	7	5	260,760	1,303,800	256,900	18	98.40%
SPLT4	87	80	37	313,970	11,616,900	314,000	25	98.23%
SPLT5	1							
ST1.5	2	1	3	258,433	775,300	262,500	26	97.80%
ST2	314	217	100	295,038	29,503,826	280,000	29	98.42%
<b>SW</b>								
BK-SP	2	4	4	438,700	1,754,800	364,900	8	101.75%
BLEVL	40	40	21	356,948	7,495,899	337,500	23	98.40%
BUNG	202	146	99	499,577	49,458,170	425,000	30	96.97%
BUNGH	13	8	3	1,029,000	3,087,000	950,000	30	99.65%
BUNGS	1	1						
SPLT2	52	46	26	581,554	15,120,400	500,000	24	98.60%
SPLT3	8	8	1	725,000	725,000	725,000	23	98.65%
SPLT4	34	32	27	499,411	13,484,100	415,000	25	97.51%
SPLT5	4	3	1	528,000	528,000	528,000	5	99.64%
ST1.5	12	8	4	519,875	2,079,500	423,000	26	96.29%
ST2	340	291	161	591,542	95,238,200	481,000	26	97.42%
ST2.5	5	3						
ST3	2	1						
<b>SE</b>								
BK-SP	6	6	2	358,000	716,000	346,000	19	98.11%
BLEVL	25	23	21	363,490	7,633,300	361,000	29	98.85%
BUNG	93	94	65	384,502	24,992,600	350,000	22	98.83%
NA	1							
SPLT2	46	38	16	500,436	8,006,975	449,275	19	97.86%
SPLT3	2	4	2	334,750	669,500	307,500	13	98.11%
SPLT4	25	29	15	400,433	6,006,500	395,000	22	98.12%
SPLT5	2	1	1	559,900	559,900	559,900	28	100.00%
ST1.5	4	4	2	272,500	545,000	265,000	12	101.68%
ST2	225	220	108	434,402	46,915,383	426,000	20	98.71%
ST3			1	555,000	555,000	555,000	84	95.71%
Villa	1	1						

NOTE: The above sales totals and median prices are for detached homes only. These figures do not include: Residential Attached, Duplex Side by Side, Duplex Up and Down, Townhouse, or Vacant Lot.

**CALGARY REAL ESTATE BOARD**  
**RESIDENTIAL LISTINGS, SALES, SALES TO LISTING RATIO, AVERAGE AND MEDIAN**  
**PRICE SUMMARY**  
**AUGUST 2006**

<u>Month</u>	<u>Listings</u>	<u>Sales</u>	<u>S/L Ratio</u>	<u>Avg Price</u>	<u>Median Price</u>
<u>2004</u>					
January	3,644	1,495	41.03	218,904	198,000
February	3,397	1,923	56.61	219,774	202,500
March	4,084	2,824	69.15	221,725	202,000
April	4,029	2,597	64.46	220,245	203,000
May	4,066	2,643	65.00	219,445	203,000
June	3,844	2,503	54.75	226,857	205,500
July	3,511	2,362	62.27	220,884	200,000
August	3,469	2,365	68.18	221,207	201,000
September	3,586	2,131	59.43	221,090	202,500
October	3,226	2,135	66.18	224,934	204,000
November	2,676	1,996	74.59	229,114	205,000
December	1,634	1,538	94.13	233,310	206,000
<u>2005</u>					
January	3,479	1,613	46.36	240,328	215,000
February	3,468	2,230	64.30	241,506	214,900
March	4,165	2,967	71.24	250,285	220,000
April	4,226	3,216	76.10	249,331	221,500
May	4,180	3,173	75.91	249,522	222,000
June	3,654	3,132	85.71	245,803	220,000
July	3,166	2,723	86.01	245,704	221,000
August	3,318	2,788	84.03	243,835	219,303
September	3,260	2,647	81.20	253,944	223,500
October	2,813	2,584	91.86	254,506	223,000
November	2,448	2,617	106.90	264,402	230,500
December	1,563	1,877	120.09	273,716	238,000
<u>2006</u>					
January	2,981	2,408	80.78	289,130	254,900
February	3,230	3,060	94.74	304,560	267,900
March	3,949	3,497	88.55	325,481	285,000
April	3,572	3,389	94.88	341,839	312,000
May	4,137	3,550	85.81	358,214	325,000
June	4,555	3,388	74.38	367,033	334,500
July	4,469	2,586	57.87	357,831	330,000
August	4,271	2,516	58.91	365,732	328,000

NOTE: The Median is the central or middle point of a series of numbers.

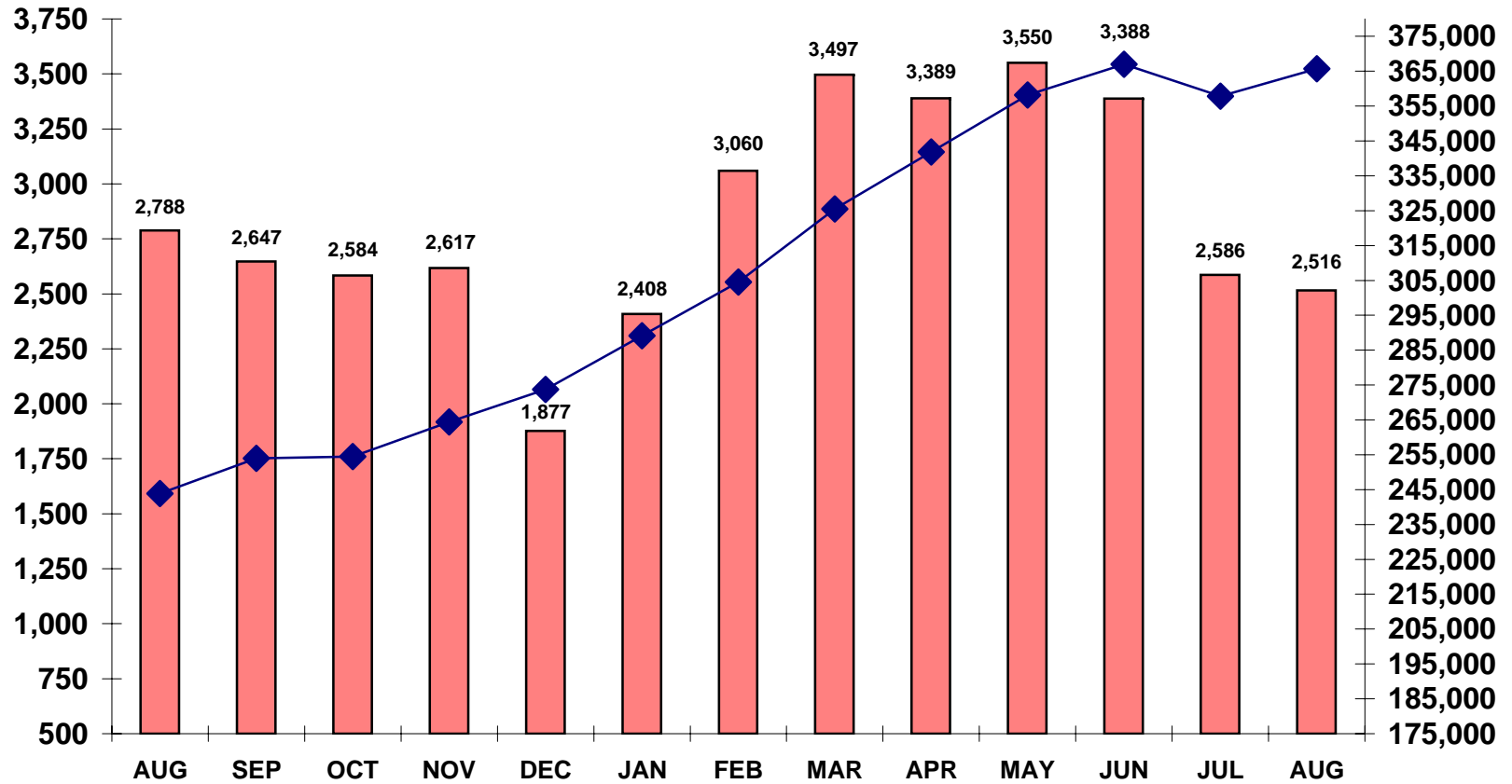
**Calgary Real Estate Board  
Residential Combined  
Long Term Comparison Summary**

	1992	1993	1994	1995	1996	1997	1998	1999	2000	2001	2002	2003	2004	2005	2006
<b>January</b>															
# Lists	3,277	2,909	2,964	2,841	2,752	2,518	1,869	2,533	2,743	3,214	2,950	3,354	3,644	3,479	2,981
# Sales	1,243	745	904	791	988	1,439	1,115	1,088	1,241	1,318	1,827	1,640	1,495	1,613	2,408
Avg.Price	129,265	130,791	130,810	134,735	131,957	136,879	152,347	157,837	171,959	175,052	189,322	208,999	218,904	240,328	289,130
<b>February</b>															
# Lists	3,060	3,074	2,784	2,222	2,480	2,425	2,309	2,564	2,681	2,718	2,828	3,042	3,397	3,468	3,230
#Sales	1,707	1,116	1,477	902	1,317	1,685	1,575	1,596	1,661	1,649	2,303	1,825	1,923	2,230	3,060
Avg.Price	125,593	132,383	131,720	133,059	132,892	138,039	155,104	162,680	177,245	178,279	188,328	203,380	219,774	241,506	304,560
<b>March</b>															
# Lists	3,757	3,449	3,591	2,741	2,791	2,632	2,667	3,139	3,067	3,354	3,049	3,365	4,084	4,165	3,949
# Sales	2,059	1,609	1,764	1,110	1,495	1,858	1,808	1,928	1,894	1,999	2,344	2,137	2,824	2,967	3,497
Avg.Price	128,658	131,503	133,995	134,454	137,747	141,175	156,183	166,255	174,797	184,132	194,158	206,578	221,725	250,285	325,481
<b>April</b>															
# List	3,168	3,243	3,079	2,488	2,698	2,908	2,772	2,926	2,980	3,147	3,316	3,617	4,029	4,226	3,572
# Sales	1,747	1,710	1,609	1,131	1,604	2,192	2,137	2,012	1,701	1,984	2,633	2,400	2,597	3,216	3,389
Avg.Price	128,023	133,046	136,035	133,032	138,147	146,250	156,308	165,355	178,778	181,575	196,486	209,941	220,245	249,331	341,838
<b>May</b>															
#Lists	2,979	3,163	2,644	2,734	2,835	2,623	3,052	2,946	3,434	3,424	3,247	4,013	4,066	4,180	4,137
#Sales	1,379	1,809	1,521	1,324	1,740	1,982	2,214	2,021	2,097	2,399	2,462	2,449	2,643	3,173	3,550
Avg.Price	131,318	135,839	137,695	132,957	138,572	144,572	158,404	167,778	175,252	184,413	202,108	210,734	219,445	249,522	358,214
<b>June</b>															
#Lists	2,894	3,226	2,455	2,582	2,464	2,357	2,901	3,092	3,087	3,003	3,029	3,757	3,869	3,654	4,555
#Sales	1,490	1,796	1,444	1,342	1,572	1,829	2,261	2,035	1,949	2,138	2,259	2,277	2,503	3,132	3,388
Avg.Price	130,700	132,246	134,781	132,824	137,653	146,254	157,687	164,525	182,020	183,047	200,985	212,282	226,857	245,803	367,033
<b>July</b>															
#Lists	2,830	2,746	2,244	2,283	2,318	2,311	2,732	2,479	2,740	2,795	2,986	3,632	3,511	3,166	4,469
#Sales	1,403	1,535	1,185	1,155	1,590	1,921	1,879	1,881	1,729	1,986	2,197	2,381	2,362	2,733	2,586
Avg.Price	129,951	137,219	129,555	136,790	135,035	142,877	158,521	167,586	175,862	183,630	196,472	209,932	220,884	245,704	357,831
<b>August</b>															
#Lists	2,472	2,742	2,312	2,423	2,234	2,005	2,903	2,453	2,806	2,651	2,784	3,342	3,469	3,318	4,271
#Sales	1,447	1,615	1,162	1,401	1,404	1,872	1,654	1,746	1,799	2,028	2,133	2,136	2,365	2,788	2,516
Avg.Price	124,907	130,469	134,501	127,979	136,129	144,108	157,148	165,901	176,086	183,048	202,423	215,220	221,207	243,835	365,732
<b>September</b>															
#Lists	3,084	2,772	2,302	2,078	2,122	2,075	2,867	2,613	2,808	2,411	2,965	3,622	3,586	3,260	
#Sales	1,594	1,404	1,107	1,105	1,375	2,082	1,756	1,730	1,628	1,869	1,981	2,071	2,131	2,647	
Avg.Price	125,835	131,998	128,863	129,693	132,282	139,959	158,304	163,787	174,498	181,607	197,431	212,342	221,090	253,944	
<b>October</b>															
#Lists	2,608	2,473	2,080	2,119	2,118	1,889	2,499	2,217	2,563	2,509	2,890	3,474	3,226	2,813	
#Sales	1,492	1,276	1,075	1,137	1,485	2,005	1,553	1,527	1,618	1,821	1,930	2,021	2,135	2,584	
Avg.Price	128,446	129,599	131,406	124,742	131,238	144,225	160,295	169,068	175,804	181,697	201,316	212,609	224,934	254,506	
<b>November</b>															
#Lists	2,182	2,417	1,922	1,619	1,765	1,617	1,998	1,910	2,214	2,218	2,239	2,481	2,676	2,448	
#Sales	1,331	1,318	1,075	922	1,794	1,463	1,419	1,530	1,439	1,926	1,676	1,662	1,996	2,617	
Avg.Price	130,660	128,244	127,826	131,465	131,371	146,518	156,798	172,503	175,376	182,801	202,901	221,391	229,114	264,402	
<b>December</b>															
#Lists	1,448	1,505	1,134	1,068	1,331	1,147	1,259	1,188	1,198	1,230	1,622	1,577	1,634	1,563	
#Sales	965	1,068	791	683	1,402	1,231	1,183	1,103	1,072	1,395	1,309	1,360	1,538	1,877	
Avg.Price	129,495	129,891	132,758	134,037	130,788	149,364	159,960	168,711	176,130	182,176	210,330	211,665	233,310	273,716	
<b>Total</b>															
#Lists	33,759	33,719	29,511	27,198	27,908	26,507	29,828	30,060	32,321	32,674	33,905	39,276	41,880	39,703	31,154
#Sales	17,857	17,001	15,114	13,003	17,766	21,559	20,554	20,197	19,828	22,512	25,054	24,359	26,463	31,495	24,320
Avg.Price	127,621	132,272	132,868	131,952	134,643	143,305	157,353	166,110	176,305	182,090	198,057	211,164	222,801	250,943	339,633

**Calgary Real Estate Board  
Condominium Only  
Long Term Comparison Summary**

	1992	1993	1994	1995	1996	1997	1998	1999	2000	2001	2002	2003	2004	2005	2006
<b>January</b>															
#Lists	419	483	564	438	518	511	401	535	670	717	734	868	986	1,041	832
#Sales	121	99	131	104	159	268	233	206	274	267	432	389	355	429	634
Avg.Price	102,634	97,723	100,532	104,684	98,578	109,878	112,223	118,914	126,882	133,348	140,783	156,042	161,536	176,720	202,065
<b>February</b>															
#Lists	376	469	479	402	451	437	454	529	563	549	691	789	965	911	875
#Sales	214	156	261	148	181	318	333	297	332	367	534	482	492	588	905
Avg.Price	93,542	95,945	100,043	104,925	104,623	109,050	112,016	123,548	143,297	136,480	146,704	156,205	164,565	178,501	217,181
<b>March</b>															
#Lists	453	517	569	428	427	433	524	668	673	777	749	847	1,087	1,090	1,028
#Sales	234	219	259	156	209	351	388	360	379	415	590	552	749	786	995
Avg.Price	102,320	95,772	95,890	107,658	104,819	107,481	110,597	122,038	131,274	138,923	148,438	154,624	166,714	180,984	235,427
<b>April</b>															
#Lists	398	580	448	388	426	503	482	557	638	673	808	830	990	1,118	944
#Sales	220	246	236	154	216	397	426	394	350	389	623	599	669	844	922
Avg.Price	99,336	107,698	108,942	98,820	103,439	105,098	112,913	121,488	136,644	133,327	145,423	153,871	159,069	183,528	256,455
<b>May</b>															
#Lists	363	488	386	432	514	459	570	622	739	702	784	935	1,067	1,094	1,128
#Sales	161	242	246	199	251	366	443	365	435	517	568	606	692	867	1,001
Avg.Price	103,263	106,477	103,465	104,015	104,420	109,754	114,837	132,882	135,752	147,521	151,436	155,151	166,211	181,379	270,861
<b>June</b>															
#Lists	375	488	334	414	396	407	604	697	627	613	697	886	1,016	963	1,243
#Sales	174	305	221	177	249	325	471	461	387	470	544	523	619	885	1,011
Avg.Price	101,647	103,267	101,567	103,229	107,098	111,410	120,596	129,847	133,661	138,846	151,817	156,454	171,251	185,304	276,955
<b>July</b>															
#Lists	331	410	343	371	432	415	517	538	596	667	727	877	913	860	1,241
#Sales	158	217	168	146	241	364	377	378	388	412	536	582	607	788	831
Avg.Price	95,130	107,052	97,445	94,182	101,759	110,219	113,825	127,695	137,751	140,923	156,444	157,697	165,384	182,680	271,641
<b>August</b>															
#Lists	347	466	366	489	370	363	529	527	610	608	653	814	939	960	1,131
#Sales	177	298	200	217	227	382	358	378	407	450	514	502	654	822	812
Avg.Price	95,255	99,235	103,251	97,403	108,084	108,378	118,231	128,473	131,200	137,665	153,520	155,289	166,247	182,500	276,536
<b>September</b>															
#Lists	519	486	367	403	407	403	542	566	630	518	725	881	962	893	
#Sales	231	236	155	215	239	458	354	363	356	399	500	519	564	732	
Avg.Price	99,933	105,846	97,678	99,722	107,594	111,497	125,661	126,570	132,539	139,107	152,426	159,663	164,676	183,133	
<b>October</b>															
#Lists	455	460	358	456	428	357	562	501	622	569	779	866	950	781	
#Sales	211	218	173	192	256	405	304	319	352	406	448	491	567	765	
Avg.Price	97,604	99,290	103,884	103,688	105,922	110,875	125,608	139,507	135,227	135,194	153,601	159,435	169,977	187,528	
<b>November</b>															
#Lists	352	406	342	315	357	371	419	455	581	594	577	636	769	674	
#Sales	202	216	151	150	291	309	313	344	385	476	417	429	597	767	
Avg.Price	96,846	103,043	92,147	111,734	98,862	108,429	121,919	142,745	144,612	139,954	153,461	163,988	170,333	193,268	
<b>December</b>															
#Lists	217	324	220	183	218	232	278	274	281	299	416	416	449	427	
#Sales	155	209	118	98	269	250	256	260	242	328	317	366	434	530	
Avg.Price	96,587	93,892	115,714	112,425	101,530	107,595	136,305	139,831	142,263	139,925	169,651	154,002	172,243	192,412	
<b>Total</b>															
#Lists	4,605	5,577	4,776	4,719	4,944	4,891	5,882	6,469	7,230	7,286	8,340	9,645	11,286	10,799	8,409
#Sales	2,258	2,661	2,319	1,956	2,788	4,193	4,256	4,125	4,287	4,896	6,023	6,040	6,993	8,784	7,070
Avg.Price	98,083	102,126	101,491	102,972	103,831	109,194	118,236	129,477	135,860	138,818	151,337	156,781	166,466	184,294	252,253

# Calgary Real Estate Board Number of Residential Sales and Average Prices August 2005 to August 2006



## Residential Sales by Price Category 2004 - 2006 Month of August

