



300 Manning Road N.E., Calgary, AB. T2E 8K4  
Phone: (403) 263-0530, Fax: (403) 218-3688

# News Release

For more information, please contact:  
Ron Esch, Executive Vice President, at 781-1308  
Dawn Van der Helm, Communications Assistant at 781-1319

*For Immediate Release*

## **MAY SETS A NEW RECORD WITH NUMBER OF MLS® SALES**

**Calgary, June 2, 2006** – MLS® sales continued to show a steady and strong pace in the month of May, while sales hit an all time high, according to figures released by the Calgary Real Estate Board.

May combined residential sales totaled 3,550, the highest May on record, showing a 12.38 per cent increase over May 2005 when the sales were recorded as 3,159 and showing a very slight increase of 4.75 per cent from last months high of 3,389. The breakdown of the May combined sales was, 2,519 single-family residences, 1,001 condominium, and 30 mobile homes. May 2005 sales in the same categories were, 2,274; 861; and 24, respectively.

The average combined residential sale price for May 2006 was \$358,214, the highest sale price on MLS® record, showing a 43.45 per cent increase over May 2005, when the average price was \$249,719, and a 4.79 per cent increase over April 2006's average price of \$341,838. Broken out, the following is a comparison of single-family, condominium, and mobile home average sale prices for the month of May 2006 over 2005: single-family \$396,694 / \$277,807; condominium \$270,861 / \$181,495; and mobile home \$41,880 / \$35,831.

May 2006 residential combined listings totaled 4,137, a 1 per cent decrease from May 2005, when 4,178 listings came to market and showing a 15.82 per cent increase over the 3,572 homes listed in April.

Condominium sales also kept a steady pace with 1,001 sales changing hands. Sales for condominiums for the same period last year were 861 showing a 16.26 per cent increase. The average condominium price in May 2006 was \$270,861, the highest ever in MLS® history, compared to the \$181,495 in May 2005; a 49.24 per cent increase and an 5.62 per cent increase over the April average price of \$256,455.

“The Calgary and regional real estate market continues to unfold with numbers predictable to the strong economic climate”, reported CREB® President, Kevin Clark. “With the summer market soon upon us we would anticipate a softening of unit numbers in the weeks ahead, but the prices to remain on a positive trajectory. Look to your REALTOR for the most comprehensive analysis of where the best opportunities can be found”.

Average price information can be useful in establishing trends over time, but does not indicate actual prices in centres comprised of widely divergent neighbourhoods or account for price differentials between geographical areas. The median price is determined by selecting the middle number of total sale prices – the combined residential median price for May 2006 was \$325,000; up 46.40 per cent from May 2005, when the median price was \$222,000 and up 4.17 per cent from the median price in April of \$312,000.

The Calgary Real Estate Board is a professional body of 5,270 licensed brokers and registered agents, representing 257 member offices. The Board does not generate statistics or analysis of any individual member or company's market share. All MLS® active listings for Calgary and area may be found on the Board's website at [www.creb.com](http://www.creb.com).

**CALGARY REAL ESTATE BOARD CO-OPERATIVE LIMITED**  
**MONTHLY STATISTICS FOR MAY 2006**

**SINGLE FAMILY**

	<u>2006</u>	<u>2005</u>	<u>Mth Chg</u>	<u>2006 YTD</u>	<u>2005 YTD</u>	<u>YTD Chg</u>
Actives @ end of month	1,450			n/a	n/a	n/a
New Listings	2,982	3,053	-2.33%	12,957	14,076	-7.95%
Sales	2,519	2,274	10.77%	11,344	9,596	18.22%
Avg DOM	18	36	-50.00%	21	38	-44.74%
Average Sale Price	396,694	277,807	42.79%	363,074	273,086	32.95%
Median Price	361,500	245,000	47.55%	329,500	241,500	36.44%
Dollar Volume	999,271,508	631,733,752	58.18%	4,118,709,751	2,620,533,551	57.17%
Sales to Listing Ratio	84.47%	74.48%	13.41%	87.55%	68.17%	28.42%
Sales\$/List\$	100.40%	97.90%	2.55%	99.90%	97.90%	2.04%

**CONDOMINIUM**

Actives @ end of month	421			n/a	n/a	n/a
New Listings	1,128	1,090	3.49%	4,805	5,232	-8.16%
Sales	1,001	861	16.26%	4,438	3,495	26.98%
Avg DOM	14	41	-65.85%	19	44	-56.82%
Average Sale Price	270,861	181,495	49.24%	239,058	180,685	32.31%
Median Price	253,000	165,000	53.33%	218,000	162,000	34.57%
Dollar Volume	271,131,845	156,267,392	73.51%	1,060,937,749	631,494,298	68.00%
Sales to Listing Ratio	88.74%	78.99%	12.34%	92.36%	66.80%	38.27%
Sales\$/List\$	102.30%	97.90%	4.49%	100.90%	97.80%	3.17%

**MOBILE**

Actives @ end of month	30			n/a	n/a	n/a
Listings	27	35	-22.86%	101	190	-46.84%
Sales	30	24	25.00%	87	71	22.54%
Avg DOM	54	84	-35.71%	61	72	-15.28%
Average Sale Price	41,880	35,831	16.88%	39,902	37,096	7.57%
Median Price	39,000	33,000	18.18%	39,000	31,000	25.81%
Dollar Volume	1,256,400	859,950	46.10%	3,471,488	2,633,796	31.81%
Sales to Listing Ratio	111.11%	68.57%	62.04%	86.14%	68.57%	25.62%
Sales\$/List\$	94.70%	91.60%	3.38%	94.00%	90.80%	3.52%

**RURAL w/ HOME**

Actives @ end of month	292			n/a	n/a	n/a
New Listings	199	179	11.17%	756	896	-15.63%
Sales	131	99	32.32%	522	403	29.53%
Avg DOM	56	81	-30.86%	61	82	-25.61%
Average Sale Price	786,477	488,522	60.99%	682,554	505,351	35.07%
Median Price	665,000	440,000	51.14%	585,000	440,000	32.95%
Dollar Volume	103,028,533	48,363,686	113.03%	356,293,416	203,656,624	74.95%
Sales to Listing Ratio	65.83%	55.31%	19.02%	69.05%	44.98%	53.52%
Sales\$/List\$	96.70%	96.50%	0.21%	96.70%	95.90%	0.83%

**RURAL LAND**

Actives @ end of month	179			n/a	n/a	n/a
New Listings	77	73	5.48%	320	312	2.56%
Sales	54	31	74.19%	207	117	76.92%
Avg DOM	119	87	36.78%	120	90	33.33%
Average Sale Price	499,709	291,674	71.32%	437,309	263,528	65.94%
Median Price	270,900	178,000	52.19%	269,000	175,000	53.71%
Dollar Volume	26,984,276	9,041,900	198.44%	90,522,988	30,832,731	193.59%
Sales to Listing Ratio	70.13%	42.47%	65.14%	64.69%	37.50%	72.50%
Sales\$/List\$	93.80%	95.20%	-1.47%	96.40%	95.90%	0.52%

**RESIDENTIAL COMBINED (Single Family, Condo, Mobile)**

Actives @ end of month	1,900			n/a	n/a	n/a
New Listings	4,137	4,178	-0.98%	17,863	19,498	-8.39%
Sales	3,550	3,159	12.38%	15,869	13,162	20.57%
Avg DOM	17	38	-55.26%	20	40	-50.00%
Average Sale Price	358,214	249,719	43.45%	326,619	247,277	32.09%
Median Price	325,000	222,000	46.40%	292,000	220,000	32.73%
Dollar Volume	1,271,659,753	788,861,094	61.20%	5,183,118,988	3,254,661,645	59.25%
Sales to Listing Ratio	85.81%	75.61%	13.49%	88.84%	67.50%	31.60%
Sales\$/List\$	100.80%	97.90%	2.96%	100.10%	97.90%	2.25%

**TOTAL MLS<sup>®</sup>**

Actives @ end of month	2,371			n/a	n/a	n/a
New Listings	4,413	4,430	-0.38%	18,939	20,706	-8.53%
Sales	3,735	3,289	13.56%	16,598	13,682	21.31%
Average Sale Price	375,280	257,302	45.85%	339,194	255,018	33.01%
Dollar Volume	1,401,672,562	846,266,680	65.63%	5,629,935,392	3,489,151,000	61.36%
Sales to Listing Ratio	84.64%	74.24%	14.00%	87.64%	66.08%	32.63%

\*\*Year-to-date values in the monthly statistics package will accurately reflect our database at that specific point in time. Older monthly statistics will not reflect up-to-date changes that naturally occur.

**CALGARY REAL ESTATE BOARD CO-OPERATIVE LIMITED**  
**SINGLE FAMILY UNIT SALES BY PRICE CATEGORY AS AT May 31, 2006**

<i>City</i>	<b>May-06</b>				<b>May-05</b>			
	<b>Month</b>		<b>Y.T.D.</b>		<b>Month</b>		<b>Y.T.D.</b>	
	<b>#</b>	<b>%</b>	<b>#</b>	<b>%</b>	<b>#</b>	<b>%</b>	<b>#</b>	<b>%</b>
0 - 49,999	1	0.05%	1	0.01%	0	0.00%	1	0.01%
50,000 - 59,999	0	0.00%	0	0.00%	0	0.00%	0	0.00%
60,000 - 69,999	0	0.00%	0	0.00%	0	0.00%	0	0.00%
70,000 - 79,999	0	0.00%	0	0.00%	0	0.00%	0	0.00%
80,000 - 89,999	0	0.00%	2	0.02%	0	0.00%	4	0.05%
90,000 - 99,999	0	0.00%	3	0.03%	0	0.00%	6	0.07%
100,000 - 109,999	0	0.00%	2	0.02%	2	0.11%	8	0.10%
110,000 - 119,999	0	0.00%	9	0.10%	1	0.05%	16	0.20%
120,000 - 129,999	1	0.05%	13	0.14%	10	0.53%	44	0.54%
130,000 - 139,999	1	0.05%	14	0.15%	15	0.79%	99	1.22%
140,000 - 149,999	3	0.15%	31	0.33%	29	1.52%	137	1.69%
150,000 - 174,999	11	0.54%	157	1.67%	140	7.36%	669	8.23%
175,000 - 199,999	10	0.49%	272	2.90%	255	13.40%	1131	13.91%
200,000 - 224,999	45	2.19%	445	4.75%	238	12.51%	983	12.09%
225,000 - 249,999	90	4.39%	718	7.66%	254	13.35%	1058	13.02%
250,000 - 274,999	155	7.56%	818	8.72%	221	11.61%	970	11.93%
275,000 - 299,999	150	7.31%	799	8.52%	167	8.78%	723	8.90%
300,000 - 349,999	381	18.58%	1671	17.82%	212	11.14%	868	10.68%
350,000 - 399,999	359	17.50%	1468	15.66%	131	6.88%	499	6.14%
400,000 - 499,999	463	22.57%	1621	17.29%	108	5.68%	445	5.47%
500,000 - 699,999	275	13.41%	929	9.91%	81	4.26%	299	3.68%
700,000 - 899,999	58	2.83%	208	2.22%	18	0.95%	79	0.97%
OVER 900,000	48	2.34%	196	2.09%	21	1.10%	89	1.09%
	<b>2,051</b>		<b>9,377</b>		<b>1,903</b>		<b>8,128</b>	
<i>Out of Town</i>								
0 - 49,999	16	3.42%	52	2.64%	6	1.62%	24	1.63%
50,000 - 59,999	1	0.21%	22	1.12%	1	0.27%	13	0.89%
60,000 - 69,999	3	0.64%	25	1.27%	5	1.35%	17	1.16%
70,000 - 79,999	3	0.64%	21	1.07%	4	1.08%	11	0.75%
80,000 - 89,999	6	1.28%	23	1.17%	4	1.08%	16	1.09%
90,000 - 99,999	9	1.92%	26	1.32%	5	1.35%	20	1.36%
100,000 - 109,999	8	1.71%	23	1.17%	8	2.16%	26	1.77%
110,000 - 119,999	7	1.50%	28	1.42%	8	2.16%	30	2.04%
120,000 - 129,999	9	1.92%	43	2.19%	9	2.43%	35	2.38%
130,000 - 139,999	5	1.07%	30	1.53%	14	3.77%	54	3.68%
140,000 - 149,999	10	2.14%	31	1.58%	13	3.50%	57	3.88%
150,000 - 174,999	17	3.63%	107	5.44%	39	10.51%	168	11.44%
175,000 - 199,999	20	4.27%	123	6.25%	45	12.13%	203	13.83%
200,000 - 224,999	21	4.49%	157	7.98%	50	13.48%	193	13.15%
225,000 - 249,999	29	6.20%	200	10.17%	43	11.59%	174	11.85%
250,000 - 274,999	41	8.76%	167	8.49%	31	8.36%	124	8.45%
275,000 - 299,999	46	9.83%	174	8.85%	32	8.63%	105	7.15%
300,000 - 349,999	54	11.54%	250	12.71%	20	5.39%	83	5.65%
350,000 - 399,999	59	12.61%	189	9.61%	9	2.43%	33	2.25%
400,000 - 499,999	61	13.03%	152	7.73%	9	2.43%	39	2.66%
500,000 - 699,999	28	5.98%	74	3.76%	11	2.96%	28	1.91%
700,000 - 899,999	10	2.14%	30	1.53%	4	1.08%	11	0.75%
OVER 900,000	5	1.07%	20	1.02%	1	0.27%	4	0.27%
	<b>468</b>		<b>1,967</b>		<b>371</b>		<b>1,468</b>	

Note: Does not include Condo or Mobile Home

\*\*Year-to-date values in the monthly statistics package will accurately reflect our database at that specific point in time. Older monthly statistics will not reflect up-to-date changes that naturally occur."

**CALGARY REAL ESTATE BOARD CO-OPERATIVE LIMITED**  
**CONDO UNIT SALES BY PRICE CATEGORY AS AT May 31, 2006**

<i>City</i>	May-06			May-05				
	#	Month %	Y.T.D. %	#	Month %	#	Y.T.D. %	
0 - 49,999	1	0.11%	1	0.03%	0	0.00%	1	0.03%
50,000 - 59,999	0	0.00%	0	0.00%	0	0.00%	1	0.03%
60,000 - 69,999	0	0.00%	5	0.13%	1	0.13%	5	0.16%
70,000 - 79,999	0	0.00%	1	0.03%	2	0.26%	12	0.37%
80,000 - 89,999	0	0.00%	7	0.18%	13	1.68%	44	1.37%
90,000 - 99,999	1	0.11%	10	0.25%	10	1.29%	74	2.31%
100,000 - 109,999	0	0.00%	23	0.58%	31	3.99%	131	4.09%
110,000 - 119,999	1	0.11%	52	1.32%	42	5.41%	199	6.21%
120,000 - 129,999	2	0.22%	76	1.93%	51	6.57%	206	6.43%
130,000 - 139,999	5	0.56%	125	3.17%	64	8.25%	291	9.09%
140,000 - 149,999	8	0.89%	147	3.73%	64	8.25%	285	8.90%
150,000 - 174,999	52	5.82%	476	12.08%	156	20.10%	645	20.14%
175,000 - 199,999	107	11.97%	626	15.88%	123	15.85%	454	14.17%
200,000 - 224,999	100	11.19%	475	12.05%	68	8.76%	269	8.40%
225,000 - 249,999	132	14.77%	512	12.99%	54	6.96%	212	6.62%
250,000 - 274,999	120	13.42%	381	9.67%	29	3.74%	109	3.40%
275,000 - 299,999	124	13.87%	334	8.48%	22	2.84%	73	2.28%
300,000 - 349,999	118	13.20%	339	8.60%	25	3.22%	95	2.97%
350,000 - 399,999	57	6.38%	142	3.60%	11	1.42%	35	1.09%
400,000 - 499,999	41	4.59%	110	2.79%	4	0.52%	27	0.84%
500,000 - 699,999	18	2.01%	63	1.60%	6	0.77%	25	0.78%
700,000 - 899,999	5	0.56%	26	0.66%	0	0.00%	7	0.22%
OVER 900,000	2	0.22%	10	0.25%	0	0.00%	3	0.09%
	<b>894</b>		<b>3,941</b>		<b>776</b>		<b>3,203</b>	
<i>Out of Town</i>								
0 - 49,999	1	0.93%	15	3.02%	0	0.00%	0	0.00%
50,000 - 59,999	0	0.00%	1	0.20%	0	0.00%	0	0.00%
60,000 - 69,999	0	0.00%	1	0.20%	0	0.00%	1	0.34%
70,000 - 79,999	0	0.00%	1	0.20%	0	0.00%	1	0.34%
80,000 - 89,999	0	0.00%	7	1.41%	2	2.35%	5	1.71%
90,000 - 99,999	1	0.93%	9	1.81%	3	3.53%	15	5.14%
100,000 - 109,999	2	1.87%	7	1.41%	5	5.88%	15	5.14%
110,000 - 119,999	5	4.67%	22	4.43%	9	10.59%	32	10.96%
120,000 - 129,999	2	1.87%	27	5.43%	4	4.71%	22	7.53%
130,000 - 139,999	4	3.74%	21	4.23%	11	12.94%	29	9.93%
140,000 - 149,999	4	3.74%	30	6.04%	10	11.76%	30	10.27%
150,000 - 174,999	6	5.61%	61	12.27%	17	20.00%	55	18.84%
175,000 - 199,999	10	9.35%	67	13.48%	7	8.24%	21	7.19%
200,000 - 224,999	17	15.89%	61	12.27%	1	1.18%	7	2.40%
225,000 - 249,999	18	16.82%	45	9.05%	2	2.35%	9	3.08%
250,000 - 274,999	9	8.41%	24	4.83%	3	3.53%	8	2.74%
275,000 - 299,999	7	6.54%	17	3.42%	3	3.53%	9	3.08%
300,000 - 349,999	2	1.87%	22	4.43%	2	2.35%	9	3.08%
350,000 - 399,999	5	4.67%	19	3.82%	3	3.53%	13	4.45%
400,000 - 499,999	12	11.21%	28	5.63%	1	1.18%	8	2.74%
500,000 - 699,999	1	0.93%	9	1.81%	1	1.18%	2	0.68%
700,000 - 899,999	1	0.93%	1	0.20%	1	1.18%	1	0.34%
OVER 900,000	0	0.00%	2	0.40%	0	0.00%	0	0.00%
	<b>107</b>		<b>497</b>		<b>85</b>		<b>292</b>	

Note: Does not include Single-Family or Mobile Home

\*\*Year-to-date values in the monthly statistics package will accurately reflect our database at that specific point in time. Older monthly statistics will not reflect up-to-date changes that naturally occur."

**CALGARY REAL ESTATE BOARD CO-OPERATIVE LIMITED  
SINGLE FAMILY DETACHED HOMES STATISTICS FOR MAY 2006**

<b>STYLE</b>	<b>#Actives</b>	<b>#List</b>	<b>#Sales</b>	<b>Avg S\$</b>	<b>Total S\$</b>	<b>Median \$</b>	<b>Avg DOM</b>	<b>S\$/L\$</b>
<b>NW</b>								
BK-SP	4	12	10	385,555	3,855,550	347,900	10	100.13%
BLEVL	25	66	51	341,708	17,427,102	325,002	12	102.50%
BUNG	139	248	206	441,357	90,919,550	400,000	17	100.67%
BUNGH	13	16	3	431,667	1,295,000	380,000	11	100.02%
SPLT2	42	65	43	486,810	20,932,827	455,000	17	99.56%
SPLT3	3	6	3	318,300	954,900	319,900	6	101.08%
SPLT4	15	37	30	373,942	11,218,255	363,000	11	101.54%
SPLT5	3	5	2	508,000	1,016,000	276,000	12	97.71%
ST1.5	10	16	14	437,320	6,122,480	422,500	14	100.92%
ST2	144	358	324	450,813	146,063,305	425,000	13	100.77%
ST2.5		1	2	507,500	1,015,000	490,000	19	100.51%
ST3	2	1						
<b>NE</b>								
BK-SP	7	14	12	261,521	3,138,251	260,000	11	102.71%
BLEVL	47	148	128	262,751	33,632,175	265,000	12	100.60%
BUNG	59	142	133	276,242	36,740,227	275,000	12	100.42%
BUNGH			1	317,500	317,500	317,500	61	99.53%
SPLT2	6	9	10	351,900	3,519,000	320,000	17	98.22%
SPLT3	4	6	6	261,450	1,568,700	256,000	12	100.59%
SPLT4	22	56	45	289,289	13,018,010	290,000	13	100.86%
SPLT5	1	2	1	300,000	300,000	300,000	16	100.00%
ST1.5	2	3	1	332,500	332,500	332,500	19	100.79%
ST2	60	203	182	292,243	53,188,264	269,900	12	100.44%
<b>SW</b>								
BK-SP	1	3	3	350,633	1,051,900	345,000	12	99.26%
BLEVL	21	40	34	360,945	12,272,138	353,000	12	101.03%
BUNG	124	196	141	441,361	62,231,887	405,000	15	100.16%
BUNGH	6	8	5	634,600	3,173,000	590,000	31	99.51%
SPLT2	25	45	32	487,686	15,605,938	446,000	14	99.33%
SPLT3	1	3	2	381,000	762,000	350,000	6	102.31%
SPLT4	17	34	30	447,693	13,430,800	372,500	11	101.32%
SPLT5	1	1	2	545,000	1,090,000	340,000	9	99.10%
ST1.5	8	7	10	945,300	9,453,000	565,000	32	100.27%
ST2	134	295	240	587,168	140,920,391	479,900	18	100.57%
ST2.5	2	3	3	782,333	2,347,000	765,000	36	97.93%
ST3	2	5	3	795,833	2,387,500	811,000	46	99.40%
<b>SE</b>								
BK-SP		1						
BLEVL	10	30	31	336,952	10,445,499	330,000	13	100.09%
BUNG	37	100	88	393,622	34,638,777	349,800	13	100.09%
BUNGH	1	1	2	434,000	868,000	268,000	23	98.27%
SPLT2	22	34	18	505,739	9,103,300	438,500	17	101.58%
SPLT3	1	4	6	343,650	2,061,900	342,500	14	103.38%
SPLT4	5	26	26	365,369	9,499,600	354,000	11	100.36%
SPLT5			2	316,750	633,500	272,500	21	97.49%
ST1.5	4	6	6	394,951	2,369,705	385,000	13	100.22%
ST2	69	170	143	437,337	62,539,227	405,000	13	100.58%
ST3			1	489,000	489,000	489,000	90	100.00%

NOTE: The above sales totals and median prices are for detached homes only. These figures do not include: Residential Attached, Duplex Side by Side, Duplex Up and Down, Townhouse, or Vacant Lot.

**CALGARY REAL ESTATE BOARD**  
**RESIDENTIAL LISTINGS, SALES, SALES TO LISTING RATIO, AVERAGE AND MEDIAN**  
**PRICE SUMMARY**  
**MAY 2006**

<u>Month</u>	<u>Listings</u>	<u>Sales</u>	<u>S/L Ratio</u>	<u>Avg Price</u>	<u>Median Price</u>
<u>2004</u>					
January	3,644	1,495	41.03	218,904	198,000
February	3,397	1,923	56.61	219,774	202,500
March	4,084	2,824	69.15	221,725	202,000
April	4,029	2,597	64.46	220,245	203,000
May	4,066	2,643	65.00	219,445	203,000
June	3,844	2,503	54.75	226,857	205,500
July	3,511	2,362	62.27	220,884	200,000
August	3,469	2,365	68.18	221,207	201,000
September	3,586	2,131	59.43	221,090	202,500
October	3,226	2,135	66.18	224,934	204,000
November	2,676	1,996	74.59	229,114	205,000
December	1,634	1,538	94.13	233,310	206,000
<u>2005</u>					
January	3,479	1,613	46.36	240,328	215,000
February	3,468	2,230	64.30	241,506	214,900
March	4,165	2,967	71.24	250,285	220,000
April	4,226	3,216	76.10	249,331	221,500
May	4,180	3,173	75.91	249,522	222,000
June	3,654	3,132	85.71	245,803	220,000
July	3,166	2,723	86.01	245,704	221,000
August	3,318	2,788	84.03	243,835	219,303
September	3,260	2,647	81.20	253,944	223,500
October	2,813	2,584	91.86	254,506	223,000
November	2,448	2,617	106.90	264,402	230,500
December	1,563	1,877	120.09	273,716	238,000
<u>2006</u>					
January	2,981	2,408	80.78	289,130	254,900
February	3,230	3,060	94.74	304,560	267,900
March	3,949	3,497	88.55	325,481	285,000
April	3,572	3,389	94.88	341,839	312,000
May	4,137	3,550	85.81	358,214	325,000

NOTE: The Median is the central or middle point of a series of numbers.

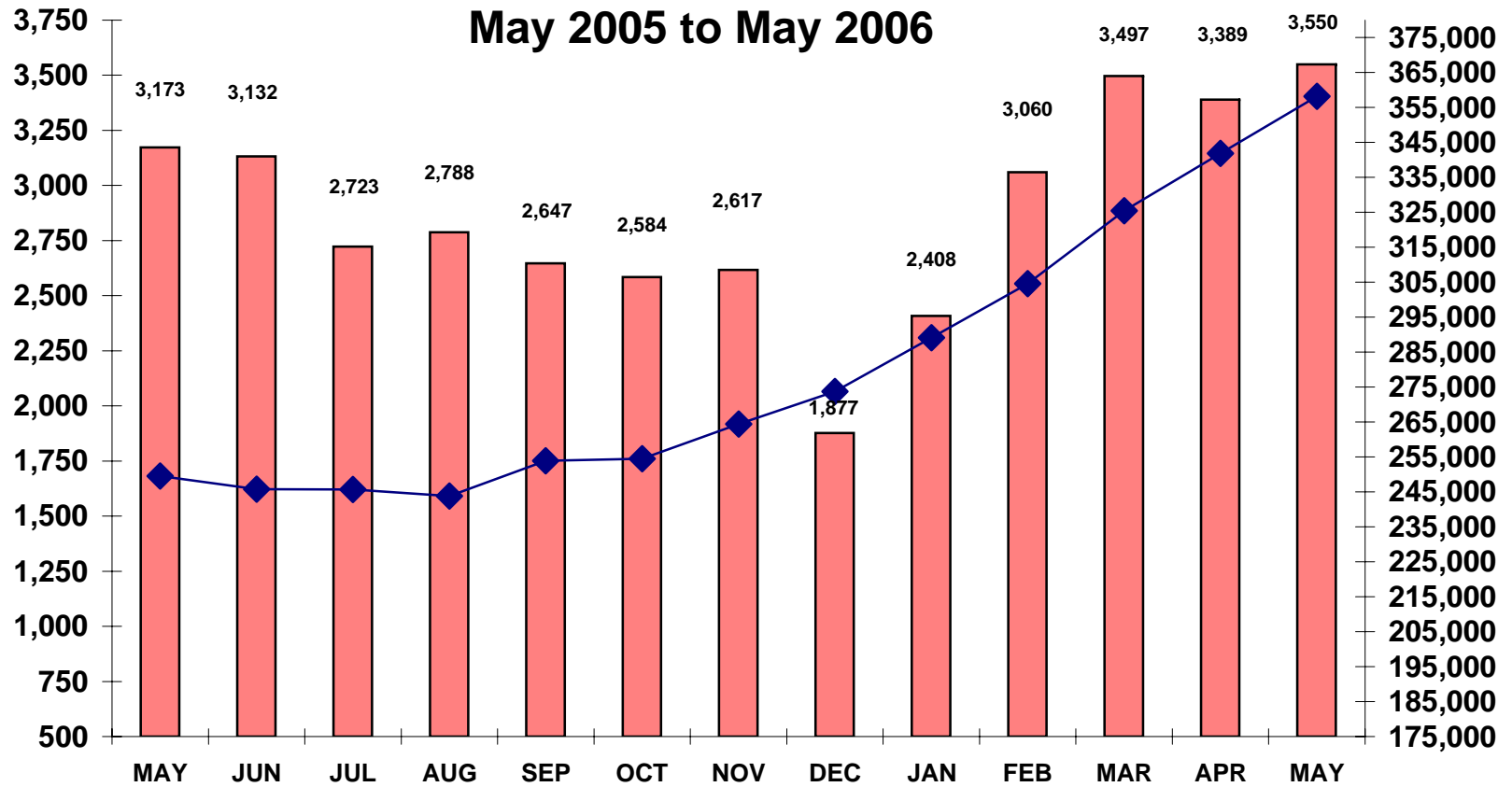
**Calgary Real Estate Board  
Residential Combined  
Long Term Comparison Summary**

	1992	1993	1994	1995	1996	1997	1998	1999	2000	2001	2002	2003	2004	2005	2006
<b>January</b>															
# Lists	3,277	2,909	2,964	2,841	2,752	2,518	1,869	2,533	2,743	3,214	2,950	3,354	3,644	3,479	2,981
# Sales	1,243	745	904	791	988	1,439	1,115	1,088	1,241	1,318	1,827	1,640	1,495	1,613	2,408
Avg.Price	129,265	130,791	130,810	134,735	131,957	136,879	152,347	157,837	171,959	175,052	189,322	208,999	218,904	240,328	289,130
<b>February</b>															
# Lists	3,060	3,074	2,784	2,222	2,480	2,425	2,309	2,564	2,681	2,718	2,828	3,042	3,397	3,468	3,230
#Sales	1,707	1,116	1,477	902	1,317	1,685	1,575	1,596	1,661	1,649	2,303	1,825	1,923	2,230	3,060
Avg.Price	125,593	132,383	131,720	133,059	132,892	138,039	155,104	162,680	177,245	178,279	188,328	203,380	219,774	241,506	304,560
<b>March</b>															
# Lists	3,757	3,449	3,591	2,741	2,791	2,632	2,667	3,139	3,067	3,354	3,049	3,365	4,084	4,165	3,949
# Sales	2,059	1,609	1,764	1,110	1,495	1,858	1,808	1,928	1,894	1,999	2,344	2,137	2,824	2,967	3,497
Avg.Price	128,658	131,503	133,995	134,454	137,747	141,175	156,183	166,255	174,797	184,132	194,158	206,578	221,725	250,285	325,481
<b>April</b>															
# List	3,168	3,243	3,079	2,488	2,698	2,908	2,772	2,926	2,980	3,147	3,316	3,617	4,029	4,226	3,572
# Sales	1,747	1,710	1,609	1,131	1,604	2,192	2,137	2,012	1,701	1,984	2,633	2,400	2,597	3,216	3,389
Avg.Price	128,023	133,046	136,035	133,032	138,147	146,250	156,308	165,355	178,778	181,575	196,486	209,941	220,245	249,331	341,838
<b>May</b>															
#Lists	2,979	3,163	2,644	2,734	2,835	2,623	3,052	2,946	3,434	3,424	3,247	4,013	4,066	4,180	4,137
#Sales	1,379	1,809	1,521	1,324	1,740	1,982	2,214	2,021	2,097	2,399	2,462	2,449	2,643	3,173	3,550
Avg.Price	131,318	135,839	137,695	132,957	138,572	144,572	158,404	167,778	175,252	184,413	202,108	210,734	219,445	249,522	358,214
<b>June</b>															
#Lists	2,894	3,226	2,455	2,582	2,464	2,357	2,901	3,092	3,087	3,003	3,029	3,757	3,869	3,654	
#Sales	1,490	1,796	1,444	1,342	1,572	1,829	2,261	2,035	1,949	2,138	2,259	2,277	2,503	3,132	
Avg.Price	130,700	132,246	134,781	132,824	137,653	146,254	157,687	164,525	182,020	183,047	200,985	212,282	226,857	245,803	
<b>July</b>															
#Lists	2,830	2,746	2,244	2,283	2,318	2,311	2,732	2,479	2,740	2,795	2,986	3,632	3,511	3,166	
#Sales	1,403	1,535	1,185	1,155	1,590	1,921	1,879	1,881	1,729	1,986	2,197	2,381	2,362	2,733	
Avg.Price	129,951	137,219	129,555	136,790	135,035	142,877	158,521	167,586	175,862	183,630	196,472	209,932	220,884	245,704	
<b>August</b>															
#Lists	2,472	2,742	2,312	2,423	2,234	2,005	2,903	2,453	2,806	2,651	2,784	3,342	3,469	3,318	
#Sales	1,447	1,615	1,162	1,401	1,404	1,872	1,654	1,746	1,799	2,028	2,133	2,136	2,365	2,788	
Avg.Price	124,907	130,469	134,501	127,979	136,129	144,108	157,148	165,901	176,086	183,048	202,423	215,220	221,207	243,835	
<b>September</b>															
#Lists	3,084	2,772	2,302	2,078	2,122	2,075	2,867	2,613	2,808	2,411	2,965	3,622	3,586	3,260	
#Sales	1,594	1,404	1,107	1,105	1,375	2,082	1,756	1,730	1,628	1,869	1,981	2,071	2,131	2,647	
Avg.Price	125,835	131,998	128,863	129,693	132,282	139,959	158,304	163,787	174,498	181,607	197,431	212,342	221,090	253,944	
<b>October</b>															
#Lists	2,608	2,473	2,080	2,119	2,118	1,889	2,499	2,217	2,563	2,509	2,890	3,474	3,226	2,813	
#Sales	1,492	1,276	1,075	1,137	1,485	2,005	1,553	1,527	1,618	1,821	1,930	2,021	2,135	2,584	
Avg.Price	128,446	129,599	131,406	124,742	131,238	144,225	160,295	169,068	175,804	181,697	201,316	212,609	224,934	254,506	
<b>November</b>															
#Lists	2,182	2,417	1,922	1,619	1,765	1,617	1,998	1,910	2,214	2,218	2,239	2,481	2,676	2,448	
#Sales	1,331	1,318	1,075	922	1,794	1,463	1,419	1,530	1,439	1,926	1,676	1,662	1,996	2,617	
Avg.Price	130,660	128,244	127,826	131,465	131,371	146,518	156,798	172,503	175,376	182,801	202,901	221,391	229,114	264,402	
<b>December</b>															
#Lists	1,448	1,505	1,134	1,068	1,331	1,147	1,259	1,188	1,198	1,230	1,622	1,577	1,634	1,563	
#Sales	965	1,068	791	683	1,402	1,231	1,183	1,103	1,072	1,395	1,309	1,360	1,538	1,877	
Avg.Price	129,495	129,891	132,758	134,037	130,788	149,364	159,960	168,711	176,130	182,176	210,330	211,665	233,310	273,716	
<b>Total</b>															
#Lists	33,759	33,719	29,511	27,198	27,908	26,507	29,828	30,060	32,321	32,674	33,905	39,276	41,880	39,703	17,863
#Sales	17,857	17,001	15,114	13,003	17,766	21,559	20,554	20,197	19,828	22,512	25,054	24,359	26,463	31,495	15,869
Avg.Price	127,621	132,272	132,868	131,952	134,643	143,305	157,353	166,110	176,305	182,090	198,057	211,164	222,801	250,943	326,619

**Calgary Real Estate Board  
Condominium Only  
Long Term Comparison Summary**

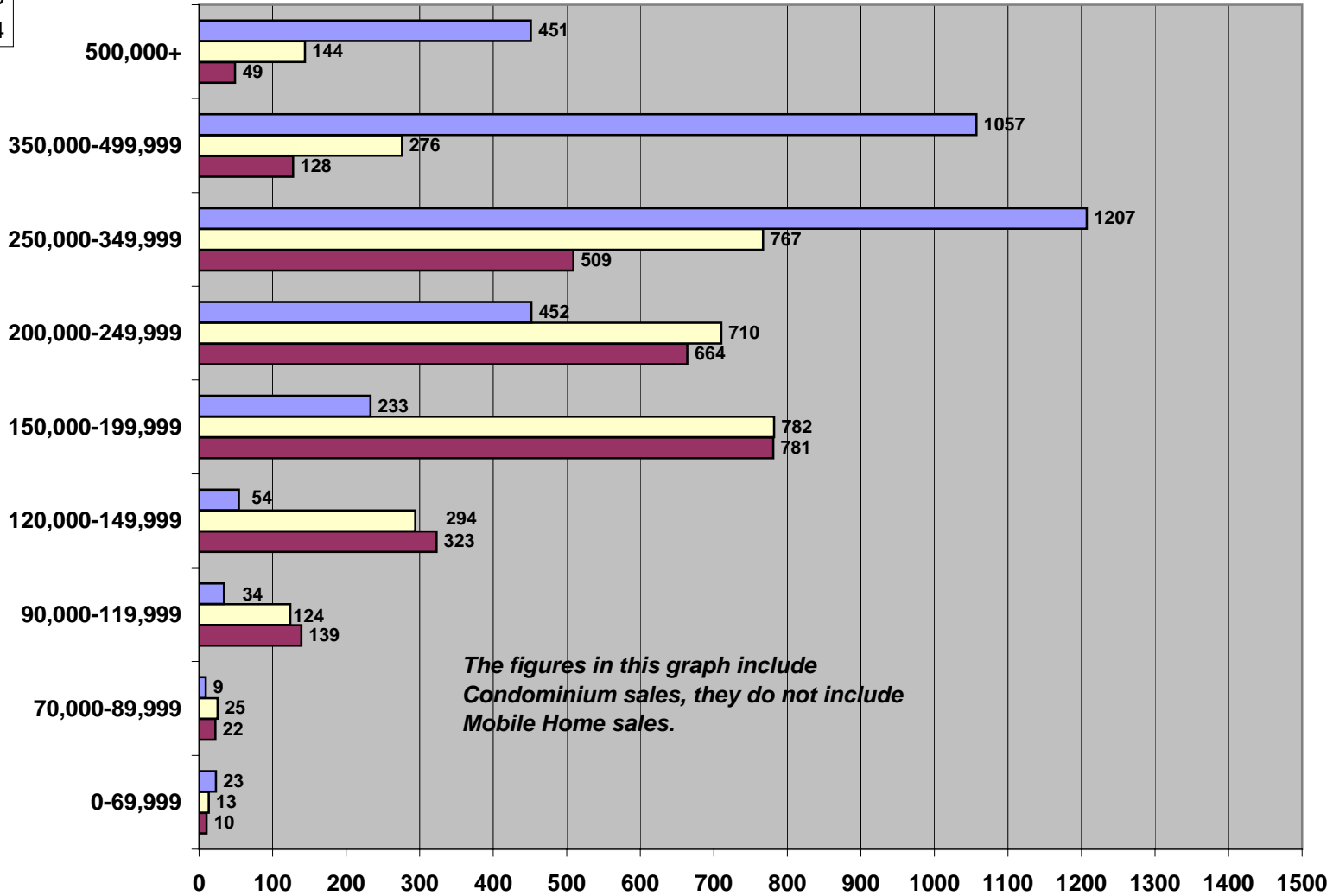
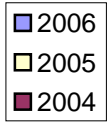
	1992	1993	1994	1995	1996	1997	1998	1999	2000	2001	2002	2003	2004	2005	2006
<b>January</b>															
#Lists	419	483	564	438	518	511	401	535	670	717	734	868	986	1,041	832
#Sales	121	99	131	104	159	268	233	206	274	267	432	389	355	429	634
Avg.Price	102,634	97,723	100,532	104,684	98,578	109,878	112,223	118,914	126,882	133,348	140,783	156,042	161,536	176,720	202,065
<b>February</b>															
#Lists	376	469	479	402	451	437	454	529	563	549	691	789	965	911	875
#Sales	214	156	261	148	181	318	333	297	332	367	534	482	492	588	905
Avg.Price	93,542	95,945	100,043	104,925	104,623	109,050	112,016	123,548	143,297	136,480	146,704	156,205	164,565	178,501	217,181
<b>March</b>															
#Lists	453	517	569	428	427	433	524	668	673	777	749	847	1,087	1,090	1,028
#Sales	234	219	259	156	209	351	388	360	379	415	590	552	749	786	995
Avg.Price	102,320	95,772	95,890	107,658	104,819	107,481	110,597	122,038	131,274	138,923	148,438	154,624	166,714	180,984	235,427
<b>April</b>															
#Lists	398	580	448	388	426	503	482	557	638	673	808	830	990	1,118	944
#Sales	220	246	236	154	216	397	426	394	350	389	623	599	669	844	922
Avg.Price	99,336	107,698	108,942	98,820	103,439	105,098	112,913	121,488	136,644	133,327	145,423	153,871	159,069	183,528	256,455
<b>May</b>															
#Lists	363	488	386	432	514	459	570	622	739	702	784	935	1,067	1,094	1,128
#Sales	161	242	246	199	251	366	443	365	435	517	568	606	692	867	1,001
Avg.Price	103,263	106,477	103,465	104,015	104,420	109,754	114,837	132,882	135,752	147,521	151,436	155,151	166,211	181,379	270,861
<b>June</b>															
#Lists	375	488	334	414	396	407	604	697	627	613	697	886	1,016	963	
#Sales	174	305	221	177	249	325	471	461	387	470	544	523	619	885	
Avg.Price	101,647	103,267	101,567	103,229	107,098	111,410	120,596	129,847	133,661	138,846	151,817	156,454	171,251	185,304	
<b>July</b>															
#Lists	331	410	343	371	432	415	517	538	596	667	727	877	913	860	
#Sales	158	217	168	146	241	364	377	378	388	412	536	582	607	788	
Avg.Price	95,130	107,052	97,445	94,182	101,759	110,219	113,825	127,695	137,751	140,923	156,444	157,697	165,384	182,680	
<b>August</b>															
#Lists	347	466	366	489	370	363	529	527	610	608	653	814	939	960	
#Sales	177	298	200	217	227	382	358	378	407	450	514	502	654	822	
Avg.Price	95,255	99,235	103,251	97,403	108,084	108,378	118,231	128,473	131,200	137,665	153,520	155,289	166,247	182,500	
<b>September</b>															
#Lists	519	486	367	403	407	403	542	566	630	518	725	881	962	893	
#Sales	231	236	155	215	239	458	354	363	356	399	500	519	564	732	
Avg.Price	99,933	105,846	97,678	99,722	107,594	111,497	125,661	126,570	132,539	139,107	152,426	159,663	164,676	183,133	
<b>October</b>															
#Lists	455	460	358	456	428	357	562	501	622	569	779	866	950	781	
#Sales	211	218	173	192	256	405	304	319	352	406	448	491	567	765	
Avg.Price	97,604	99,290	103,884	103,688	105,922	110,875	125,608	139,507	135,227	135,194	153,601	159,435	169,977	187,528	
<b>November</b>															
#Lists	352	406	342	315	357	371	419	455	581	594	577	636	769	674	
#Sales	202	216	151	150	291	309	313	344	385	476	417	429	597	767	
Avg.Price	96,846	103,043	92,147	111,734	98,862	108,429	121,919	142,745	144,612	139,954	153,461	163,988	170,333	193,268	
<b>December</b>															
#Lists	217	324	220	183	218	232	278	274	281	299	416	416	449	427	
#Sales	155	209	118	98	269	250	256	260	242	328	317	366	434	530	
Avg.Price	96,587	93,892	115,714	112,425	101,530	107,595	136,305	139,831	142,263	139,925	169,651	154,002	172,243	192,412	
<b>Total</b>															
#Lists	4,605	5,577	4,776	4,719	4,944	4,891	5,882	6,469	7,230	7,286	8,340	9,645	11,286	10,799	4,805
#Sales	2,258	2,661	2,319	1,956	2,788	4,193	4,256	4,125	4,287	4,896	6,023	6,040	6,993	8,784	4,438
Avg.Price	98,083	102,126	101,491	102,972	103,831	109,194	118,236	129,477	135,860	138,818	151,337	156,781	166,466	184,294	239,058

# Calgary Real Estate Board Number of Residential Sales and Average Prices



# Residential Sales by Price Category 2004 - 2006

## Month of May



*The figures in this graph include Condominium sales, they do not include Mobile Home sales.*